

PRO-PLAN CHART NO. 45.

THE ROMER

MAPS ARE USUALLY OVERLAID WITH VERTICAL AND HORIZONTAL LINES KNOWN AS THE GRID.

THE VERTICAL LINES ARE EASTINGS - THE HORIZONTAL LINES ARE NORTHINGS

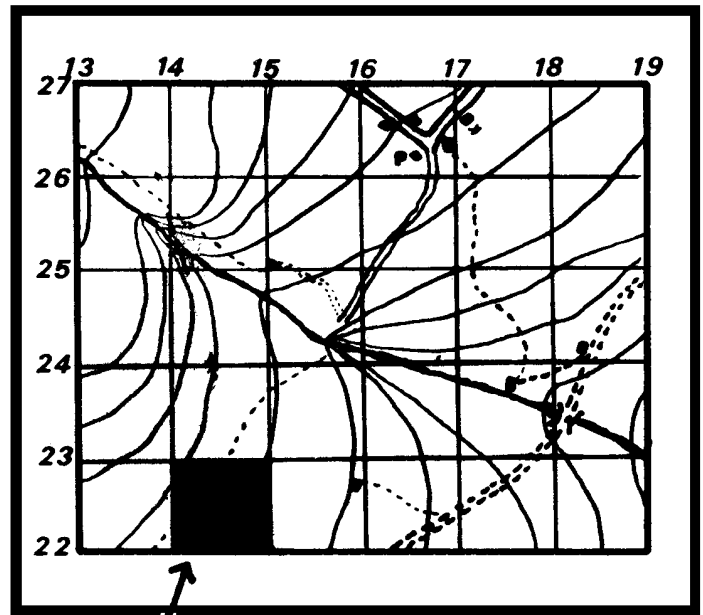
THE FIGURES ON THE GRID LINES ARE GRID NUMBERS

THESE LINES AND NUMBERS MAKE IT POSSIBLE TO REFER TO ANY AREA ON A MAP BY USING "GRID REFS."

FOR GREATER ACCURACY EACH GRID SQUARE IS SUB-DIVIDED INTO A SMALLER GRID AND TO DO THIS A ROMER IS USED. A ROMER IS MADE TO THE SIZE OF THE GRID AND MARKED AS SHOWN

IN USE THE ROMER IS PLACED ON THE MAP WITH THE ARROW HEAD AT THE POINT OF REFERENCE TO WORK OUT THE GRID REF. WE FIRST READ THE EASTING (16) PLUS THE READING ON THE TOP OF THE ROMER (4) GIVING US 164. THEN REPEAT WITH THE NORTHINGS AND SIDE READING ON THE ROMER (26)

THE FULL GRID REF. IS 164261
ALWAYS USE SIX FIGURES



THE ROMER MUST BE THE SIZE OF A GRID SQUARE

THE ROMER IS HERE SHOWN LARGER THAN NORMAL FOR CLARITY

